



2021 FIRST QUARTER NEW COLONY KITS

OVER 3,000 ENGINEERED KITS FOR HARLEY-DAVIDSON
MOTORCYCLES FROM 1911 TO PRESENT



Part No. 3508-2 REAR BRAKE ROD CLEVIS Heat treated and parkerized reproduction of 4067-15 clevis and 0112 machined nut used on 1915-1929 Twins.



Part No. 3547-5 SPROCKET BOLT CHROME WASHER KIT Zinc plated spring steel 6516HW washers used on 7/16" rear sprocket bolts on most 1973-up Big Twins and 1979-up Sportsters.



Part No. 3551-4 TRIPLE CLAMP BOLT KIT Parkerized reproduction of 2655-30 studs and 0117 nuts used on 1930-1931 All Twins.



Part No. 3552-6 CLUTCH COVER MOUNTING KIT Chrome plated button head screws, 1/4-20 x 5/8", OEM 943, used on 2004-up Sportster.



Part No. 3553-3 REAR AXLE MOUNTING KIT Chrome plated 7987 castle nut, 5756 flat washer and 510 pin used on 1989-up Big Twins and Sportster.



Part No. 3554-4 GAS TANK MOUNTING KIT Chrome plated button head screws replace 3634 used on 2008-up Touring and 2017-up Milwaukee-Eight.



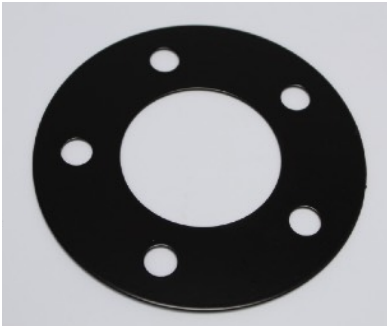
Part No. 3555-2 STEERING DAMPER BUSHING SCREW Cadmium plated reproduction of 46743-52 screw and 7124 lock washer used on 1952-1966 K, KH, XL, XLH, XLCH.



Part No. 3564-4 TRIPLE CLAMP BOLT KIT Parkerized reproduction of 2655-29 studs and 0117 nuts used on 1929 Electric Singles and 1930 21" Singles.



Part No. 3565-1 AIR CLEANER SPRING, J-SLOT Spring steel parkerized reproduction of air cleaner spring 29040-41, 1405-41 used on 1941-1965 FL, 1941-1948 UL and 1941-1952 WL.



Part No. 3566-1 FRONT WHEEL HUB PLATE Black powder coated 43355-84 plate used on various 1991-1999 Sportster models, 1984-1999 FXR, FXD. 2-1/8" ID x 4-3/8" OD x 3/8" hole.



Part No. 3567-1 FRONT WHEEL HUB PLATE Silver powder coated 43359-84 plate used on various 1991-1999 Sportster models, 1984-1999 FXR, FXD. 2-1/8" ID x 4-3/8" OD x 3/8" hole.



Part No. 3568-12 INNER PRIMARY MOUNTING BOLT KIT Reproduction of 786A bolts and seals, 791A bolts, properly mounts inner primary on 2006-up Dyna and 2007-up Softail and Touring Models.



Part No. 3569-6 LOCK TAB, INNER PRIMARY MOUNT Zinc plated reproduction of 33318-85 lock tab used on 1985-2005 Big Twins. Pack of 6 pieces.



Part No. 3570-10 DISC FRONT BRAKE ROTOR TO HUB SCREW AND NUT KIT Zinc plated allen screw and locknuts fit 1978-1983 FXWG. Dual disc use 2 sets. OEM replaces 3685.



Part No. 3571-10 DISC BRAKE ROTOR TO HUB ALLEN SCREW KIT Zinc plated allen screws fit front dual disc 1978-1982 FX, XL. Replaces OEM 3680.



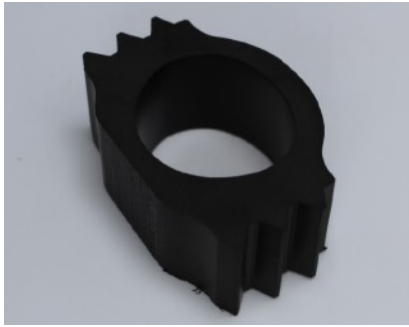
Part No. 3572-5 FRONT BRAKE ROTOR MOUNTING KIT Custom button head style zinc plated torx screws replace OEM 3762M used on 2006-up Dyna with cast wheel only.



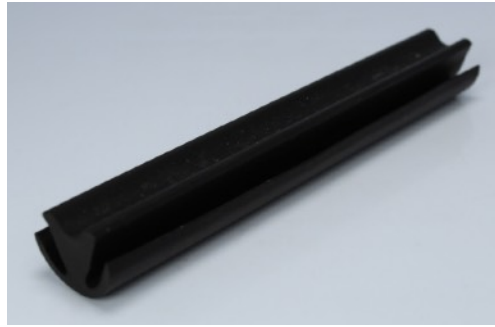
Part No. 3573-10 FRONT BRAKE ROTORS MOUNTING KIT Custom button head style zinc plated torx screws replace OEM 3762M used on 2002-up VRSC models except VRSCAW and VRSCAWA.



Part No. 3574-1 GAS TANK RUBBER DIVIDER Reproduction of 3502-39, 61122-39 rubber divider used on 1939-early 1979 Big Twins. Longer than stock and may require trimming down. 4-1/2" long.



Part No. 3575-1 GAS TANK BUFFER Reproduction of 3505-26, 3505-36 rubber buffer used on 1926-1934 Singles and 1929-1937 45" Twins.



Part No. 3576-1 GAS TANK RUBBER DIVIDER Reproduction of 3502-36A rubber divider used on 1936-1938 Big Twins. Longer than stock and may require trimming down. 6" long.



Part No. 3674-10 CHROME PLATED KNURLED ALLEN STYLE SPROCKET BOLT & WASHER KIT Fits 73-92 Big Twins and 79-90 XL w/cast wheel and 93-98 Big Twins except 97-98 Softail w/spoke wheel. Replaces OEM 3769, 3771.



Part No. 3693-20 REAR FENDER RAIL SCREW AND NUT KIT Chrome plated 7680W acorn nuts, zinc plated bolts, washers, spacers, nuts used on 1972-1986 FX (except FXWG).

Colony is a manufacturer and distributor to wholesalers only. We do not sell retail to individuals. Thank you for your time and interest in Colony Machine and Tool Inc.

DISCLAIMER: WE ARE NOT RESPONSIBLE FOR TYPOS. PLEASE CONTACT YOUR LOCAL COLONY DISTRIBUTOR OR DEALER FOR PRICING. IF YOU ARE A DEALER WITH US, PLEASE INQUIRE IF YOU NEED PRICING. THANK YOU!